

GRAYS HARBOR COUNTY CEMP

Long-Term Recovery Annex

This document serves as the Long-Term Recovery Annex of the Grays Harbor County Comprehensive Emergency Management Plan (CEMP).

Grays Harbor County Emergency Management

310 West Spruce

Montesano, WA 98563

Office: (360) 249-3911

Fax: (360) 249-3805

ghcdem@graysharbor.us



March 28, 2023

Table of Contents

Introduction 1

 Purpose 1

 Scope..... 1

 Planning Assumptions..... 1

Concept of Operations..... 1

 General..... 1

 Organization..... 2

 Disaster Recovery Advisory Committee..... 3

Phases of Emergency Management..... 3

 Mitigation and Preparedness Activities 3

 Response and Recovery Activities 3

Responsibilities 4

 All Agencies..... 4

 Board of County Commissioners and Mayors 4

 Grays Harbor County Emergency Management (GHC EM) 4

 Disaster Recovery Advisory Committee..... 4

 Grays Harbor County ER&R Radio Shop..... 4

 Grays Harbor County Central Services..... 4

 Grays Harbor County Division of Facility Services 5

 All Support Agencies 5

Acronyms 6

Primary Agencies:

Grays Harbor County Emergency Management (GHC EM)

Grays Harbor County ER&R Radio Shop

Grays Harbor County Central Services Department

Grays Harbor County Division of Facility Services

Support Agencies:

All County Departments and municipalities

Grays Harbor County Chambers of Commerce

Grays Harbor County Special Purpose Districts

Private industry

State and Federal Agencies

Volunteer and community organizations

Introduction

Purpose

The Long-Term Recovery Annex provides a framework for the recovery of government, business, and residents impacted by the long-term consequences of an incident of countywide significance.

Scope

The scope of this annex may vary depending on the magnitude and type of incident. The annex is activated for large-scale or catastrophic incidents that require state and federal assistance to address significant long-term impacts in such areas as housing, business and employment, community infrastructure, and social services.

Planning Assumptions

It is neither implied nor should it be inferred that this plan guarantees that a perfect response to an emergency or disaster will be practical or possible. No plan can shield individuals from all events. While every reasonable effort will be made to respond to emergencies or disasters, resources, and or systems may be overwhelmed. Some events provide little or no warning to implement operational procedures and all emergency plans are dependent upon tactical execution, which may be imperfect. This plan can only be fulfilled if the situation, information exchange, extent of actual capabilities and resources are available at the time of the incident.

Concept of Operations

General

Considerations for short-term recovery should commence as soon as the immediate lifesaving efforts in response to a disaster are completed. The resources and services of countywide organizations will be used to the greatest extent practicable. Additional services or resources or those not normally part of the countywide inventory, may come from private sources or through requests to the Washington State Emergency Management Division (EMD). Non-time critical recovery and restoration activities affecting archaeological/historical protected areas will be coordinated with the Washington State Office of Archaeology and Historic Preservation.

Implementation of long-term community recovery actions will be in coordination with the long-term development plans of local government. In managing recovery efforts, local government may form ad hoc partnerships with other jurisdictions, federal and state agencies, and the private sector to advise and assist in the implementation of recovery and mitigation plans.

Whenever Grays Harbor County qualifies for state and/or federal individual disaster assistance, individuals, families, and businesses will be referred to applicable state and federal programs or to volunteer agencies. When individuals, families, and businesses do not qualify for state or

federal assistance or whenever Grays Harbor County declares a local emergency not followed by a state or federal declaration, assistance may be provided in accordance with existing county and municipal policies and programs or by volunteer agencies. The EOC will coordinate with state and federal agencies to facilitate the delivery of assistance programs to individuals and businesses, including the identification of designated sites for Disaster Recovery Centers.

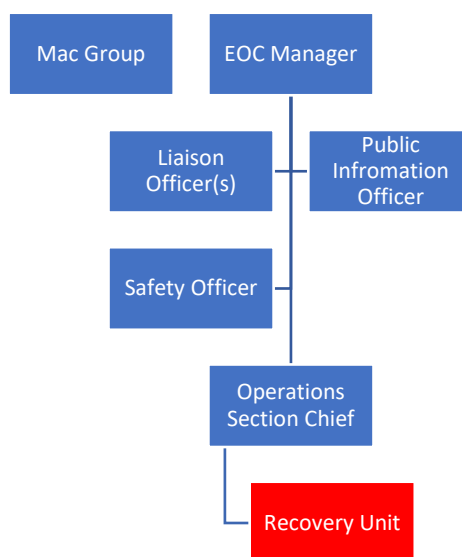
Public damage and response costs are borne by the incurring local government. Reimbursement requests are submitted through the EOC to state and federal programs, if eligible and available. All Grays Harbor County departments and municipalities will maintain an up-to-date contact list on essential personnel at the EOC. Grays Harbor County supports mitigation activities to eliminate or reduce disaster damage and to coordinate recovery efforts with long-term development and hazard mitigation plans within the county.

The EOC collects damage assessment information for both public and private loss from local jurisdictions, public entities, individuals and businesses. The EOC forwards the information to EMD, which determines if there is a level of damage to be eligible to forward to the Governor and/or President. This process may or may not result in state/federal individual assistance, public assistance, or both.

Organization

Following the response to a disaster or emergency of countywide significance, the EOC will remain activated to coordinate initial recovery and restoration activities. The EOC will remain activated until its coordinating function is no longer necessary. The EOC may reactivate on a temporary basis to meet developing needs.

When this annex is active at the EOC, it will fall under the Operations Section as the Recovery Unit unless otherwise designated by the EOC Manager. The Recovery Unit may be staffed by a member of the Disaster Recovery Advisory Committee, if activated. Otherwise, The Recovery Unit will be staffed by an appointee of the EOC Manager.



Disaster Recovery Advisory Committee

Depending on the nature of the disaster or emergency, the Board of County Commissioners may appoint a Disaster Recovery Advisory Committee to coordinate the county's mitigation, recovery and restoration actions. The Board of County Commissioners will consult with the Mayors of affected municipalities regarding the selection of members for this committee.

The Disaster Recovery Advisory Committee will determine the economic and environmental impact to Grays Harbor County and each affected municipality. This Committee may also provide recommendations to policy makers concerning issues of recovery and restoration. The Committee may support countywide activities by coordinating and maintaining contact with the EOC, and county and city officials as well as volunteer and community organizations and may recommend the priority of actions. The Disaster Recovery Advisory Committee and the Public Information Officer (PIO) will coordinate the dissemination of public information regarding accessing emergency assistance programs.

Phases of Emergency Management

Mitigation and Preparedness Activities

- Identify potential members for appointment to a Disaster Recovery Advisory Committee.
- Develop and maintain a resource list of agencies providing individual assistance programs.

Response and Recovery Activities

- The PIO will disseminate information about the FEMA disaster recovery registration process and specific local, state and federal programs for citizens and small businesses (Individual Recovery).

Responsibilities

All Agencies

- Ensure that a continuity of operations plan is in place to maintain essential services.
- Participate in drills and exercises to test existing plans and procedures.
- Participate in post-disaster briefings and development of an After-Action Report.

Board of County Commissioners and Mayors

- Determine the scope of work and appoint a Disaster Recovery Advisory Committee to recommend countywide long-term community recovery and mitigation actions.
- Review recommendations made by the Disaster Recovery Advisory Committee and direct appropriate recovery and mitigation actions.
- Participate in the Incident Command System (ICS).
- Appropriate emergency funding for long-term recovery and mitigation in accordance with ESF #7 Resource Support.

Grays Harbor County Emergency Management (GHC EM)

- Coordinate meetings among local public jurisdictions, EMD and FEMA for the process requirements for federal recovery programs (Public Assistance).
- Develop and maintain active liaison with community groups and the business community to facilitate the potential provision of recovery and restoration resources and services.
- Coordinate, collect and compile damage assessment information.
- Provide support to the Disaster Recovery Advisory Committee.

Disaster Recovery Advisory Committee

- Inform the public of available services and assistance programs through the PIO in accordance with ESF #15.
- Assist other organizations in identifying recovery and restoration actions.
- Develop, prioritize, and recommend countywide activities for disaster recovery and mitigation.
- Utilize the concepts of the National Incident Management System (NIMS) and Incident Command System (ICS) in all operations.

Grays Harbor County ER&R Radio Shop

- Report to the radio communications shop to begin assessment and restoration of the County's communications system.

Grays Harbor County Central Services

- Ensure that the County's phone system is in working order, that all computers are working smoothly, keeping everyone connected to each other and outside entities with the EOC equipment.

- Geographic Information Services (GIS) personnel will ensure the working order of GIS databases and applications.

Grays Harbor County Division of Facility Services

- Secure County-owned facilities by evaluating or locking building, setting perimeter, etc.
- Protect and secure HVAC and other ventilation and heating systems installed in County-owned facilities.
- Ensure the working order of generators and other building systems.

All Support Agencies

- Provide assessment teams to document or verify public and private damage relating to long-term restoration and mitigation.
- State and federal agencies will establish local Disaster Recovery Center(s) to assist qualified citizens with filing claims for financial or housing assistance as appropriate.
- Provide technical assistance and advice on recovery and mitigation activities, to both citizens and public agencies, as appropriate.
- Coordinate public information and assistance activities through the PIO. Keep local authorities informed of assistance provided to local residents, businesses, and public entities.
- Grays Harbor County government will be reliant on private businesses for the restoration of critical infrastructure and services owned, provided and supported by the respective business.

Acronyms

AAR	After Action Review/Report
ACCESS	A Central Computerized Enforcement Service System
AEC	Grays Harbor Auxiliary Emergency Communications
ARC	American Red Cross
AWC	Alert and Warning Center
CAA	Clean Air Act
CAMEO	Computer Aided Management for Emergency Operations
CEMNET	Comprehensive Emergency Management Network
CEMP	Comprehensive Emergency Management Plan
CERCLA	Comprehensive Environmental Response, Compensation, and Liability Act
CHEMTREC	Chemical Transpiration Emergency Center
DMAT	Disaster Medical Assistance Team
DMCC	Disaster Medical Control Center
DMORT	Disaster Mortuary Operational Response Team
DNR	Washington State Department of Natural Resources
DOH	Washington State Department of Health
DSHS	Washington State Department of Social and Health Services
E911	Grays Harbor Emergency Communications
EAS	Emergency Alert System
ECY	Washington State Department of Ecology
EHS	Extremely Hazardous Substances
EMD	Emergency Management Division
EMPC	Emergency Management Planning Committee
EMS	Emergency Medical Services
EPCRA	Emergency Planning and Community Right-to-Know Act
ERG	Emergency Response Guide Book

ESF	Emergency Support Function
GETS	Government Emergency Telecommunications Service
GHC EM	Grays Harbor County Emergency Management
GHC EOC	Grays Harbor County Emergency Operations Center
IC	Incident Commander
ICS	Incident Command System
ICP	Incident Command Post
JIC	Joint Information Center
JIS	Joint Information System
LECC	Local Emergency Communications Committee
LEPC	Local Emergency Planning Committee
NAWAS	National Warning System
NIMS	National Incident Management System
NOAA	National Oceanic and Atmospheric Administration
NRC	National Response Center
NRF	National Response Framework
OSCCR	On-Scene Control and Coordination Radio
OSHA	Occupational Safety and Health Administration
PIO	Public Information Officer
PSAP	Public Safety Access Point
RCW	Revised Code of Washington
SDS	Safety Data Sheet
SEOC	State Emergency Operations Center
SERC	State Emergency Response Commission
SOP	Standard Operating Procedures
TERC	Tribal Emergency Response Commission
UC	Unified Command

WAC Washington Administrative Code

WEA Wireless Emergency Alerts

WPS Wireless Priority Service