

# GRAYS HARBOR COUNTY CEMP

## *Search and Rescue*

---

This document serves as Emergency Support Function #9 (ESF#9) of the Grays Harbor County Comprehensive Emergency Management Plan (CEMP).

Grays Harbor County Emergency Management

310 West Spruce

Montesano, WA 98563

Office: (360) 249-3911

Fax: (360) 249-3805

ghcdem@graysharbor.us



March 28, 2023



Table of Contents

Introduction ..... 1

    Purpose ..... 1

    Scope..... 1

    Planning Assumptions..... 1

Policies ..... 1

Concept of Operations..... 2

    General..... 2

    Organization..... 3

    Volunteers..... 4

        Emergent Volunteers ..... 4

    Land SAR ..... 4

    Air SAR..... 5

    Water SAR..... 5

Phases of Emergency Management..... 5

    Mitigation and Preparedness Activities ..... 5

    Response and Recovery Activities ..... 6

        Primary Agencies..... 6

        Support Agencies ..... 6

        All Agencies ..... 6

Responsibilities ..... 6

    Primary Agencies ..... 6

    Support Agencies ..... 6

    Grays Harbor County Emergency Management (GHC EM) ..... 7

    Resource Groups..... 7

References ..... 8

    State..... 8

Acronyms ..... 9

**Primary Agencies:**

Grays Harbor County Emergency Management (GHC EM)

Grays Harbor County Sheriff's Office

U.S. Coast Guard (USCG)

Washington State Department of Transportation, Office of Emergency Management (WSDOT OEM)

**Support Agencies:**

Airlift NW and other Private Contractors (Helicopters)

American Red Cross

Confederated Tribes of the Chehalis Police Department

Fire Departments and Districts

Grays Harbor Communications Center (E911)

Municipal Law Enforcement Agencies

Quinault Indian Nation Police Department

Washington State Emergency Management Division (EMD)

## Introduction

### Purpose

Emergency Support Function 9 (ESF #9) Search and Rescue (SAR) provides for the effective utilization of search and rescue resources and for the control and coordination of various types of search and rescue operations.

### Scope

ESF #9 addresses wilderness search and rescue operations, urban and structural search and rescue, and includes search and rescue on the ground, in the air, or in the water.

### Planning Assumptions

It is neither implied nor should it be inferred that this plan guarantees a perfect emergency or disaster response will be practical or possible. No plan can shield individuals from all events. While every reasonable effort will be made to respond to emergencies or disasters, resources, and or systems may be overwhelmed. Some events provide little or no warning to implement operational procedures and all emergency plans are dependent upon tactical execution, which may be imperfect. This plan can only be fulfilled if the situation, information exchange, extent of actual capabilities and resources are available at the time of the incident.

## Policies

State law encompasses both wilderness and disaster SAR within the definition of Land SAR. Land SAR operations are primarily initiated, coordinated, and directed by local political subdivisions (counties, cities, towns) in accordance with state and local plans. Per RCW 38.52.400[1], The chief law enforcement officers of each political subdivision shall be responsible for local search and rescue activities. Within Grays Harbor County, the Grays Harbor County Sheriff's Office serves as the lead agency for SAR Missions.

Grays Harbor County may not be able to provide the necessary equipment or enough trained personnel to successfully carry out a SAR mission, especially a mission resulting from an emergency or disaster. In the event of a catastrophic incident, local authorities may be overwhelmed and, in accordance with RCW 38.52.050, it may be necessary for the SEOC to assume operational control of SAR operations within Grays Harbor County until such time as local authorities regain control.

Requests for additional resources including special skills, expertise or equipment are coordinated by Grays Harbor County Emergency Management Duty Officer or the EOC, when activated. Requests for out of county resources to meet these requirements will be coordinated between the Duty Officer or EOC and the State Emergency Operations Center (SEOC) Alert & Warning Center (AWC) and/or the SEOC ESF 9 Lead.

Air SAR for missing or downed civil aircraft is the responsibility of Washington State Department of Transportation (WSDOT).

The National Incident Management System (NIMS), Incident Command System (ICS) will be used for incident management for SAR operations within Grays Harbor County.

- "Search and rescue" means the act of searching for, rescuing or recovering by means of ground, marine, or air activity any person who becomes lost, injured or is killed while outdoors or due to a natural, technological or human caused disaster, including searches for downed aircraft when ground personnel are used. Nothing in this section shall affect appropriate activity by the Department of Transportation under Chapter 47.68 RCW (RCW 38.52.010[7]).
- The chief law enforcement officer of each political subdivision shall be responsible for local search and rescue activities. Operation of search and rescue activities shall be in accordance with state and local operations plans adopted by the elected governing body of each local political subdivision. These state and local plans must specify the use of the incident command system for multi-agency/multi-jurisdiction search and rescue operations. The local emergency management director shall notify the Duty Officer at SEOC of all search and rescue missions. The local director of emergency management shall work in a coordinating capacity directly supporting all search and rescue activities in that political subdivision and in registering emergency search and rescue workers for employee status. The chief law enforcement officer of each political subdivision may restrict access to a specific search and rescue area to personnel authorized by them. Access shall be restricted only for the period of time necessary to accomplish the search and rescue mission. No unauthorized person shall interfere with a search and rescue mission (RCW 38.52.400[1]).
- When search and rescue activities result in the discovery of a deceased person or search and rescue workers assist in the recovery of human remains, the chief law enforcement officer of the political subdivision shall ensure compliance with Chapter 68.50 RCW (RCW 38.52.400[1]).

## Concept of Operations

### General

Search and Rescue (SAR) operations within Grays Harbor County are to be initiated by the requesting agency for resources. SAR operations for outside of Grays Harbor County are to be requested from the Washington State Emergency Management Division (EMD) Alert and Warning Center (AWC). Grays Harbor County Emergency Operations Center (EOC) will assist in coordination of resources and efforts through the duty officer or the ESF #9 Coordinator in the EOC.

All SAR Missions must have a Mission Number issued by the EMD AWC. Mission Numbers are to be obtained by the EOC Duty Officer or ESF #9 Coordinator prior to any resources being deployed. The issuance of this mission number authorizes the employment of volunteers under the provisions and protection of Chapter 38.52 RCW.

Whenever local resources are exhausted, unavailable, or unqualified for a particular SAR mission, GHC EM may request assistance through EMD. The SEOC will authorize state, federal, and other local SAR volunteer resources and initiate the access of personnel, equipment, air support, and other specialized or requested supplies.

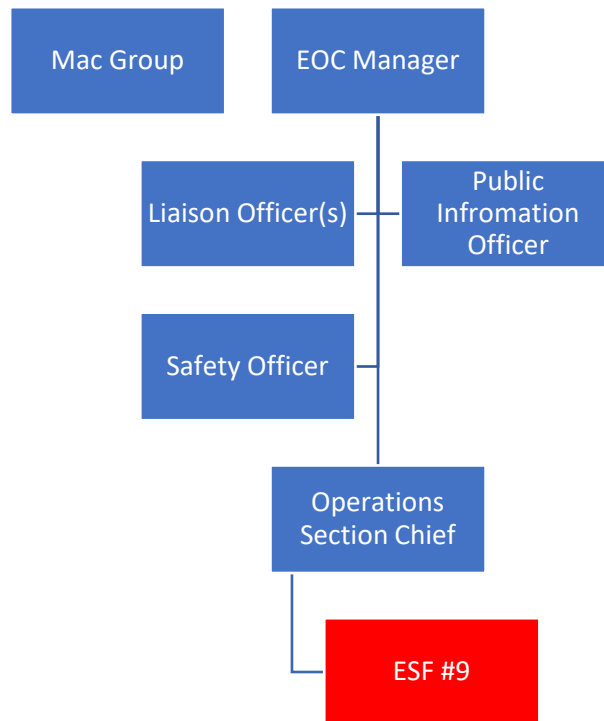
SAR operations normally will activate an Incident Command Post (ICP) location. In the event of a SAR mission, Incident Command will determine the equipment and personnel to be requested, including organized volunteer services. Control of all emergency SAR functions will remain the responsibility of the Incident Command.

If a catastrophic incident results in major, multi-jurisdiction SAR operations, the State Rescue Coordination Center (RCC) may be activated to management ESF #9 activities. The RCC is an extension of the SEOC and is activated in an emergency or disaster to support local search and rescue operations by coordinating state, out-of-state, federal, and international search and rescue operations conducted in support of the incident. The RCC may be co-located with the SEOC, County EOC, or deployed to a location in proximity to the incident site.

The EOC will help facilitate communications with the ICP, SEOC, and RCC (when activated). Communications will be through normal radio and telephone capabilities including satellite communications systems. EMD has five dedicated SAR frequencies. ESF #2 should be activated to support communications before resources get overwhelmed.

### Organization

Search and rescue operations within the field should operate under the concept of NIMS/ICS. When ESF #9 is active at the EOC, it will fall under the Operations Section unless otherwise designated by the EOC Manager. ESF #9 should be staffed by a Grays Harbor County Sheriff's Office SAR Representative. Alternative staffing can come from the other SAR trained Grays Harbor County Law Enforcement Officers and SAR trained professionals.



### Volunteers

The Emergency Worker Program is sponsored by EMD and administered by GHC EM in accordance with Chapter 38.52 RCW and Chapter 118-04 WAC. Volunteers are trained to respond to a variety of local emergencies and disasters.

The Emergency Worker Program is an organized SAR volunteer program that provides reimbursement for gas, property loss and liability protection while in a deployment capacity. The Emergency Worker Program requires that each volunteer be affiliated in good standing with GHC EM, pass a background check, perform satisfactorily on searches, and be available for search missions.

### Emergent Volunteers

During SAR missions with increased public awareness, it is not uncommon for volunteers to emerge without request. Emergent Volunteers are not covered by the Emergency Worker Program while performing Search and Rescue operations unless they are appropriately trained and credentialed by GHC EM. Volunteers may support operations without engaging in search efforts. These volunteers need to be credentialed by the Deputy Director of Emergency Management or their designee.

### Land SAR

The EOC, upon receiving a request for assistance from an authorized official, will coordinate the SAR resources within Grays Harbor County. If further assistance is necessary, the EOC will coordinate with the SEOC AWC for additional resources. The GHC EM Duty Officer, SAR

Coordinator, or on-scene Incident Commander (IC) may serve as the point of contact (POC) for out of county resources.

Local chief law enforcement officers are responsible for search and rescue operations within their jurisdictions. The National Park Service has search and rescue responsibilities on its lands and has its own enforcement and investigations divisions. The U.S. Forest Service and the Grays Harbor County Sheriff's Office have joint jurisdiction on Forest Service Lands.

### Air SAR

SAR for missing aircraft is the responsibility of Washington State Department of Transportation's Office of Emergency Management (WSDOT OEM). The responsible law enforcement agency provides incident command and coordination of resources for ground search operations for missing aircraft.

- Air SAR for missing or downed civil aircraft is the responsibility of WSDOT OEM Aviation.
- The US Air Force directs search operations for downed scheduled aircraft, downed or missing military aircraft, aircraft carrying people or things of national significance, or aircraft of international origin.
- Local law enforcement may be requested to participate in a search for downed or missing aircraft when there is a reasonable likelihood that the craft is located within their jurisdiction. These activities will be coordinated with WSDOT OEM IC and as a Unified Command if possible. Upon location of the downed aircraft, the incident becomes a ground SAR operation under the direction and control of the Incident Commander (IC).

### Water SAR

Grays Harbor County does not have a dedicated Water Rescue Team. SAR missions within County Waterways are to be handled per policy of the jurisdiction in which they occur. The EOC can assist in facilitating outside resources, when needed.

The United State Coast Guard (USCG) may direct SAR operations on or above navigable waters (water where they maintain navigational aids and/or there is commercial shipping and navigation). The local law enforcement agencies have SAR responsibility for all other freshwater and surf operations.

## Phases of Emergency Management

### Mitigation and Preparedness Activities

- Provide SAR training to responsible personnel. SAR training shall include response to urban as well as wilderness SAR.
- Develop and maintain support procedures for response to SAR operations.

- Develop and maintain a training program for personnel and volunteers for SAR operations.
- Identify critical SAR resource needs and develop ongoing recruiting efforts to address those needs.
- Provide public education to recreational users.
- Ensure that SAR supplies and equipment are in response ready condition.

## Response and Recovery Activities

### Primary Agencies

- Initiate all SAR operations within their jurisdictions, except those operations tasked to other state and federal agencies.
- Establish Incident Command for SAR operations.
- Provide trained personnel for SAR operations.
- Request additional resources as appropriate.

### Support Agencies

- Provide resources for SAR operations as requested and available.
- Respond following the concepts of ICS.

### All Agencies

- Participate in a Post Incident Analysis and development of an After-Action Report.
- Assist in the return of all SAR resources in an organized fashion in order to respond to future missions.

## Responsibilities

### Primary Agencies

- In accordance with RCW 38.52.400, the chief law enforcement officer of each political subdivision is responsible for conducting SAR operations within their jurisdiction. The law enforcement officer may restrict access to specific areas involved in the operation as the situation warrants.
- Coordinate needed SAR resources with EOC Duty Officer or ESF #9 Coordinator.
- Endeavor to provide accurate and timely emergency public information as coordinated through the Incident Command System (see ESF #15).

### Support Agencies

- Fire and EMS agencies will assist SAR operations with technical, medical and personnel support.
- Technical heavy rescue (i.e., collapsed buildings) may involve law enforcement, fire services, public works departments, building inspection divisions, and the private sector.

- E911 will be the 24-hour point of contact for the public to report possible search and rescue needs.
- Support SAR operations within the county and respective jurisdictions when requested.
- Train and prepare for SAR activities.

#### Grays Harbor County Emergency Management (GHC EM)

- Grays Harbor County Emergency Management is responsible for coordinating the County's Emergency Operations Center.
- During SAR missions, the EOC will be staffed by the EOC Duty Officer or an ESF #9 Coordinator either in person or virtually depending on the complexity of the incident.
- Secure mission number from EMD.
- Maintain SAR mission records, forward appropriate reimbursement requests and claims to EMD.
- Register emergency workers involved in SAR operations.
- Coordinate requested resources.

#### Resource Groups

- Establish membership standards in accordance with county and state policy and keep GHC EM informed of latest membership lists and call out procedures.
- Respond to SAR missions upon request by GHC EM as resources allow.

## References

### State

- RCW 9A.56.030, Theft in the first degree
- RCW 9.91.175, Interfering with Search and Rescue Dog
- RCW 38.52, Emergency Management
- RCW 47.68, Aeronautics
- WAC 118-04, Emergency Worker Program
- Washington State Emergency Management Division Forms
  - Form EMD-024, Emergency Worker Registration Card
  - Form EMD-025, Emergency Worker Identification Card
  - Form EMD-036, Fuel, Toll & Ferry Reimbursement Expenses Claim
  - Form EMD-077, Search and Rescue Mission Data Sheet
  - Form EMD-078, Emergency Worker Daily Activity Report
  - Form EMD-079, Training Mission Request

Form EMD-089, Extraordinary Expense

## Acronyms

AAR	After Action Review/Report
ACCESS	A Central Computerized Enforcement Service System
AEC	Grays Harbor Auxiliary Emergency Communications
ARC	American Red Cross
AWC	Alert and Warning Center
CAA	Clean Air Act
CAMEO	Computer Aided Management for Emergency Operations
CEMNET	Comprehensive Emergency Management Network
CEMP	Comprehensive Emergency Management Plan
CERCLA	Comprehensive Environmental Response, Compensation, and Liability Act
CHEMTREC	Chemical Transpiration Emergency Center
DMAT	Disaster Medical Assistance Team
DMCC	Disaster Medical Control Center
DMORT	Disaster Mortuary Operational Response Team
DNR	Washington State Department of Natural Resources
DOH	Washington State Department of Health
DSHS	Washington State Department of Social and Health Services
E911	Grays Harbor Emergency Communications
EAS	Emergency Alert System
ECY	Washington State Department of Ecology
EHS	Extremely Hazardous Substances
EMD	Emergency Management Division
EMPC	Emergency Management Planning Committee
EMS	Emergency Medical Services
EPCRA	Emergency Planning and Community Right-to-Know Act
ERG	Emergency Response Guide Book

ESF	Emergency Support Function
GETS	Government Emergency Telecommunications Service
GHC EM	Grays Harbor County Emergency Management
GHC EOC	Grays Harbor County Emergency Operations Center
IC	Incident Commander
ICS	Incident Command System
ICP	Incident Command Post
JIC	Joint Information Center
JIS	Joint Information System
LECC	Local Emergency Communications Committee
LEPC	Local Emergency Planning Committee
NAWAS	National Warning System
NIMS	National Incident Management System
NOAA	National Oceanic and Atmospheric Administration
NRC	National Response Center
NRF	National Response Framework
OSCCR	On-Scene Control and Coordination Radio
OSHA	Occupational Safety and Health Administration
PIO	Public Information Officer
PSAP	Public Safety Access Point
RCW	Revised Code of Washington
SDS	Safety Data Sheet
SEOC	State Emergency Operations Center
SERC	State Emergency Response Commission
SOP	Standard Operating Procedures
TERC	Tribal Emergency Response Commission
UC	Unified Command

WAC Washington Administrative Code

WEA Wireless Emergency Alerts

WPS Wireless Priority Service