

GRAYS HARBOR COUNTY CEMP

Energy

This document serves as Emergency Support Function #12 (ESF#12) of the Grays Harbor County Comprehensive Emergency Management Plan (CEMP).

Grays Harbor County Emergency Management

310 West Spruce

Montesano, WA 98563

Office: (360) 249-3911

Fax: (360) 249-3805

ghcdem@graysharbor.us



March 28, 2023

Table of Contents

Introduction 1

 Purpose 1

 Scope..... 1

 Planning Assumptions..... 1

Concept of Operations..... 1

 General..... 1

 Organization..... 2

Phases of Emergency Management..... 3

 Mitigation and Preparedness Activities 3

 Response and Recovery Activities 3

Responsibilities 5

 General..... 5

 Primary Agencies 5

 Support Agencies 5

 Grays Harbor County Emergency Management (GHC EM) 6

References 7

 State: 7

Acronyms 8

Primary Agencies:

Cascade natural Gas

City of McCleary

Grays Harbor County Public Utility District (PUD)

MASCO Petroleum

Williams Gas Pipeline

Support Agencies:

Bonneville Power Administration

Grays Harbor County Emergency Management (GHC EM)

Grays Harbor Energy

Private fuel distributors

US Department of Energy

Washington State Energy Office

Introduction

Purpose

Emergency Support Function (ESF) 12, Energy, is intended to promote the ability to restore damaged energy systems and components during a potential or actual incident of countywide significance. ESF 12 is an integral part of the responsibility for energy providers to maintain continuous and reliable energy supplies within the county through preventative measures as well as restorative actions.

Scope

ESF 12 collects, evaluates, and shares information on energy system damage and estimations on the impact of energy system outages with an affected areas. The term “energy” includes producing, refining, transporting, generating, transmitting, conserving, building, distributing, and maintaining energy systems and system components. Additionally, ESF 12 provides information concerning the energy restoration process such as project schedules, percent completion of restoration, geographic information on the restoration, and other information as appropriate.

Planning Assumptions

All emergency providers, whether publicly or privately owned, will be prepared to respond to energy-related needs resulting from an emergency or disaster. Restoration of normal operations and energy facilities is the responsibility of the facility owners.

It is neither implied nor should it be inferred that this plan guarantees a perfect emergency or disaster response will be practical or possible. No plan can shield individuals from all events. While every reasonable effort will be made to respond to emergencies or disasters, resources, and or systems may be overwhelmed. Some events provide little or no warning to implement operational procedures and all emergency plans are dependent upon tactical execution, which may be imperfect. This plan can only be fulfilled if the situation, information exchange, extent of actual capabilities and resources are available at the time of the incident.

Concept of Operations

General

Disruptions in energy supplies typically are caused by physical disruption of energy transmission and distribution systems, unexpected operational failure of such systems, or unusual economic or political events. Responding to energy and petroleum shortages or disruptions and their effects is necessary for preservation of the public health, safety, and general welfare of the County's residence, workers, and visitors. Activities during an energy emergency could include:

- Assess fuel and electric power damage
 - Assess energy supply and demand
 - Assess the requirements for restoration
-

- Coordinate with electric utilities and the petroleum and natural gas industries to identify requirements to repair energy systems
- Coordinate with the Grays Harbor County Emergency Operations Center (EOC) in establishing priorities to repair damaged energy systems
- Coordinate temporary, alternate, or interim sources of energy fuel and power; obtain current information regarding damages to energy supply and distribution systems

ESF 12 addresses significant disruptions in energy supplies for any reason, whether caused by physical disruption of energy transmission and distribution systems, unexpected operational failure of such systems, or unusual economic or political events. In the event that the entire state is affected by significant energy shortages or emergencies, the Energy Policy Division of the Washington State Department of Commerce shall prepare and update contingency plans for implementation. This duty is carried out in accordance with RWC 43.21G and WAC 192-22.

To the maximum extent possible during a disaster or emergency, energy providers will continue to provide services through their normal means. The Grays Harbor County Emergency Operations Center (EOC) will coordinate with energy providers and government officials regarding the use and availability of these of these services is delivered to the public. Energy providers will compile damage assessment reports and transmit them to the EOC. These assessments will be forwarded to the Washington State Emergency Management Division (EMD).

Organization

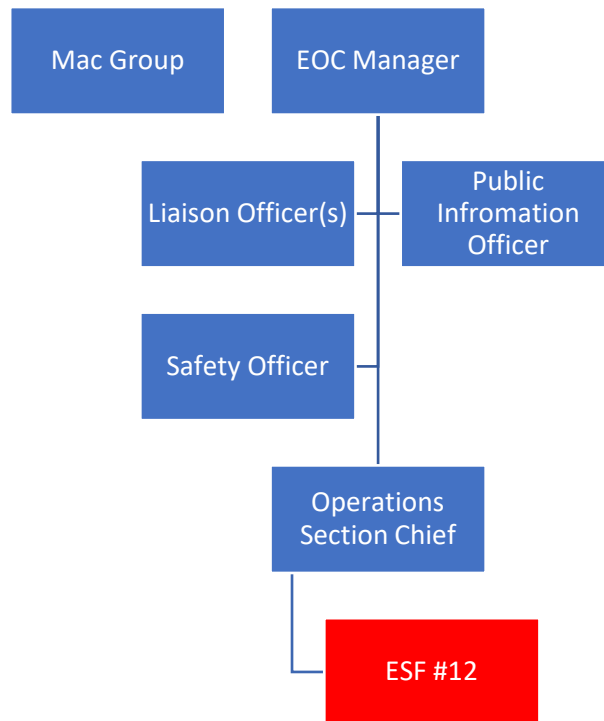
Grays Harbor Public Utility District (PUD) and the City of McCleary manage electric power within Grays Harbor County. Many end-users with high reliability needs (such as hospitals and public facilities) have their own the in-house generation resources.

Williams Gas Pipeline delivers wholesale natural gas via a 56-mile pipeline to Grays Harbor County. Cascade Natural Gas retails natural gas supplies to end users within Grays Harbor County. Propane, distributed by individual independent vendors, is the other major gas supply to Grays Harbor County.

Independent local vendors provide local petroleum supplies including:

- Home fuel heating oil.
- Pellet and wood heating products.
- Motor vehicle gas, diesel, and oil.

When ESF #12 is active at the EOC, it will fall under the Operations Section unless otherwise designated by the EOC Manager. ESF #12 should be staffed by a liaison from an affected agency of this plan.



Phases of Emergency Management

Mitigation and Preparedness Activities

- Ensure, to the best of their ability, that transmission lines, pipelines, and other modes of transmission are kept in a state of good repair.
- Coordinate with local jurisdictions to develop reasonable supplemental energy utility resource plans.
- Maintain lists of public and private utilities, including names, addresses, and telephone numbers of key officials
- Develop and maintain operating procedures for actions to take during an emergency or disaster
- Ensure that all personnel are trained in emergency operations

Response and Recovery Activities

- Activate the Grays Harbor County Emergency Operations Center (EOC) for coordination of energy resources, as appropriate
- Coordinate response and recovery actions through the Incident Command System
- Coordinate public information concerning energy with the Board of County Commissioners and Mayors
- Determine priorities among users if adequate energy supplies are not available to meet all essential needs
- Assist in the administration of energy allocation program in accordance with the governor’s emergency powers

- Compile damage and operational capability reports
- Follow in-house procedures for the repair and restoration of transmission lines, pipelines, etc. to return service to normal
- Participate in an After Action Report (AAR)

Responsibilities

General

- Emergency operations will follow the principles of an NIMS/ICS.
- ESF 12 agencies will identify critical personnel and responsibilities, emergency chain of command, appropriate emergency notification procedures, and alternate work locations. Critical personnel in supporting agencies will be informed of their role in the event of an emergency or disaster.
- ESF 12 agencies will establish mobilization procedures and lines of succession which are updated regularly.
- ESF 12 agencies will endeavor to provide accurate and timely emergency public information as coordinated through the Incident Command System.

Primary Agencies

- Identify and coordinate restoration priorities with other impacted energy companies
- Participate in field unified command
- Coordinate and allocate emergency energy resources, with utilization of local resources as the first priority
- Comply with energy allocations and curtailment programs as determined by the governor
- Determine location, extent, and restoration of energy supply disruptions or outages
- Assess infrastructure damage, supply adequacy, and markets situation
- Coordinate out-of-area private and public energy assistance
- Liaison with the Grays Harbor County Emergency Operations Center (EOC) when requested
- Provide timely and accurate information to the end-users
- Perform life safety and property preservation operations when requested
- Report findings to the EOC

Support Agencies

- Assist with development, coordination, and support of energy conservation policies and programs; especially with regard to establishing priorities for curtailment of services, restoration of services, or provision of emergency services

Grays Harbor County Emergency Management (GHC EM)

- Assists in coordinating information between agencies and energy suppliers, both private and public
- Assists the Board of County Commissioners and Mayors in prioritizing energy needs

References

State:

- RCW 43.21G, Emergency Supply Emergencies
- WAC 194-22, Washington State Curtailment Plan for Electric Energy

Acronyms

AAR	After Action Review/Report
ACCESS	A Central Computerized Enforcement Service System
AEC	Grays Harbor Auxiliary Emergency Communications
ARC	American Red Cross
AWC	Alert and Warning Center
CAA	Clean Air Act
CAMEO	Computer Aided Management for Emergency Operations
CEMNET	Comprehensive Emergency Management Network
CEMP	Comprehensive Emergency Management Plan
CERCLA	Comprehensive Environmental Response, Compensation, and Liability Act
CHEMTREC	Chemical Transpiration Emergency Center
DMAT	Disaster Medical Assistance Team
DMCC	Disaster Medical Control Center
DMORT	Disaster Mortuary Operational Response Team
DNR	Washington State Department of Natural Resources
DOH	Washington State Department of Health
DSHS	Washington State Department of Social and Health Services
E911	Grays Harbor Emergency Communications
EAS	Emergency Alert System
ECY	Washington State Department of Ecology
EHS	Extremely Hazardous Substances
EMD	Emergency Management Division
EMPC	Emergency Management Planning Committee
EMS	Emergency Medical Services
EPCRA	Emergency Planning and Community Right-to-Know Act
ERG	Emergency Response Guide Book

ESF	Emergency Support Function
GETS	Government Emergency Telecommunications Service
GHC EM	Grays Harbor County Emergency Management
GHC EOC	Grays Harbor County Emergency Operations Center
IC	Incident Commander
ICS	Incident Command System
ICP	Incident Command Post
JIC	Joint Information Center
JIS	Joint Information System
LECC	Local Emergency Communications Committee
LEPC	Local Emergency Planning Committee
NAWAS	National Warning System
NIMS	National Incident Management System
NOAA	National Oceanic and Atmospheric Administration
NRC	National Response Center
NRF	National Response Framework
OSCCR	On-Scene Control and Coordination Radio
OSHA	Occupational Safety and Health Administration
PIO	Public Information Officer
PSAP	Public Safety Access Point
RCW	Revised Code of Washington
SDS	Safety Data Sheet
SEOC	State Emergency Operations Center
SERC	State Emergency Response Commission
SOP	Standard Operating Procedures
TERC	Tribal Emergency Response Commission
UC	Unified Command

WAC Washington Administrative Code

WEA Wireless Emergency Alerts

WPS Wireless Priority Service