

# GRAYS HARBOR COUNTY CEMP

## *Defense Support of Civil Authorities*

---

This document serves as Emergency Support Function #20 (ESF#20) of the Grays Harbor County Comprehensive Emergency Management Plan (CEMP).

Grays Harbor County Emergency Management

310 West Spruce

Montesano, WA 98563

Office: (360) 249-3911

Fax: (360) 249-3805

ghcdem@graysharbor.us



March 28, 2023



Table of Contents

Introduction ..... 1  
    Purpose ..... 1  
    Scope..... 1  
    Planning Assumptions..... 1  
Concept of Operations..... 1  
    General..... 1  
    Organization..... 2  
Responsibilities ..... 3  
    EOC Logistics Section Chief ..... 3  
References ..... 4  
    State ..... 4  
Acronyms ..... 5

**Primary Agency:**

Grays Harbor County Emergency Management (GHC EM)

**Support Agencies:**

Washington State Emergency Management Division (EMD)

United State Coast Guard (USCG)

## Introduction

### Purpose

Emergency Support Function # 20 (ESF#20) – Defense Support of Civil Authorities describes the circumstances and conditions under which units of the Washington State National Guard (WANG), the Department of Defense (DOD), and the United States Coast Guard (USCG) can provide Defense Support of Civil Authorities (DSCA).

### Scope

ESF #20 applies to all requests for military support originated through the Grays Harbor County Emergency Operations Center (EOC) following a local declaration of emergency.

### Planning Assumptions

The military is capable of providing a wide range of support to local governments in an emergency. Military assistance is considered supplemental to local efforts and will not be requested unless and until applicable local resources have been, or will imminently be, exhausted. All military assistance, except requests during imminently serious situations as described herein, will be requested through the Washington State Emergency Management Division (EMD). Military support may be delayed until the governor declares a state of emergency or there has been a presidential declaration. It may take 48-hours or longer to receive military assistance.

As the USCG is not part of DOD, requests for USCG support are not dependent on EMD requests or a Washington State Emergency Proclamation. USCG support may be requested directly with Group/Air Station Astoria or through the USCG liaison at the County EOC, if available.

## Concept of Operations

### General

If the Grays Harbor County EOC cannot accommodate a resource request using local assets, a resource request will be made to EMD as part of routine resource management activities. It will be up to the state to determine the appropriate means of meeting the county's request, including the use of military assets. If the Grays Harbor County EOC Logistics Section Chief is aware of a specific resource owned by the military and needed by the county, the specific resource may be requested as part of the request sent to the State EOC.

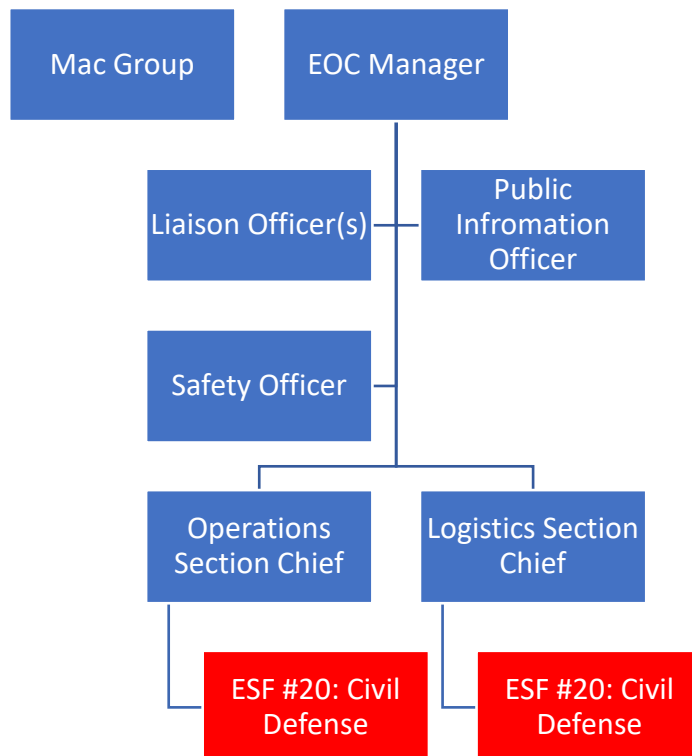
In an imminently serious situation, the EOC may request assistance directly from the military. An imminently serious situation is one in which there is an imminent threat to life and/or to property which will cause human suffering. A military unit commander can respond to direct requests for assistance, if:

1. An imminently serious situation exists.
2. The military unit is capable of providing the type of support requested without degrading its primary national defense commitments.
3. The military unit is the only source of help available including the private sector, or the only source of help including the private sector that can respond in time to support the county in alleviating the situation.
4. The Board of County Commissioners (BOCC) and affected cities have proclaimed a local emergency.
5. The City, County, or Washington State government is willing to certify to military authorities that conditions 1, 3 and 4 exist.
6. The county and/or city agree to assume the costs incurred by the military unit to provide the requested support. No costs are associated with USCG support.

Organization

When deployed to provide DSCA, military forces will work under the direction of local authority but will retain their unit integrity and military chain of command.

When ESF #20 is active at the EOC, it may fall under the Operations or Logistics Section, unless otherwise designated by the EOC Manager, depending on the resources sent and nature of emergency. ESF #20 should be staffed by a Commanding Officer of the military department which is deployed to Grays Harbor County.



## Responsibilities

### EOC Logistics Section Chief

- Assess Grays Harbor County needs to be met by military assistance and the resources and capabilities the military will need to meet those needs.
- Determine if and when a recommendation will be made to request military assistance
- Request a USCG liaison for the County EOC, if available.
- Prepare requests for military assistance in accordance standard processes.
- Transmit all requests to EMD, USCG Air Station Astoria, or USCG Westport.
- Identify suitable staging areas and coordinate logistic support with the responding unit, as appropriate.
- The military unit commander is to check in and out with Logistics.
- Establish the Logistics Section Chief as primary point of contact for the military unit. Be prepared to give clear task direction and action objectives to the military unit. Proactively coordinate all activities to ensure efficient use of requested assets.

## References

### State

- RCW 38.08, Powers and Duties of Governor
- Washington State Comprehensive Emergency Management Plan

## Acronyms

AAR	After Action Review/Report
ACCESS	A Central Computerized Enforcement Service System
AEC	Grays Harbor Auxiliary Emergency Communications
ARC	American Red Cross
AWC	Alert and Warning Center
CAA	Clean Air Act
CAMEO	Computer Aided Management for Emergency Operations
CEMNET	Comprehensive Emergency Management Network
CEMP	Comprehensive Emergency Management Plan
CERCLA	Comprehensive Environmental Response, Compensation, and Liability Act
CHEMTREC	Chemical Transpiration Emergency Center
DMAT	Disaster Medical Assistance Team
DMCC	Disaster Medical Control Center
DMORT	Disaster Mortuary Operational Response Team
DNR	Washington State Department of Natural Resources
DOH	Washington State Department of Health
DSHS	Washington State Department of Social and Health Services
E911	Grays Harbor Emergency Communications
EAS	Emergency Alert System
ECY	Washington State Department of Ecology
EHS	Extremely Hazardous Substances
EMD	Emergency Management Division
EMPC	Emergency Management Planning Committee
EMS	Emergency Medical Services
EPCRA	Emergency Planning and Community Right-to-Know Act
ERG	Emergency Response Guide Book

ESF	Emergency Support Function
GETS	Government Emergency Telecommunications Service
GHC EM	Grays Harbor County Emergency Management
GHC EOC	Grays Harbor County Emergency Operations Center
IC	Incident Commander
ICS	Incident Command System
ICP	Incident Command Post
JIC	Joint Information Center
JIS	Joint Information System
LECC	Local Emergency Communications Committee
LEPC	Local Emergency Planning Committee
NAWAS	National Warning System
NIMS	National Incident Management System
NOAA	National Oceanic and Atmospheric Administration
NRC	National Response Center
NRF	National Response Framework
OSCCR	On-Scene Control and Coordination Radio
OSHA	Occupational Safety and Health Administration
PIO	Public Information Officer
PSAP	Public Safety Access Point
RCW	Revised Code of Washington
SDS	Safety Data Sheet
SEOC	State Emergency Operations Center
SERC	State Emergency Response Commission
SOP	Standard Operating Procedures
TERC	Tribal Emergency Response Commission
UC	Unified Command

WAC Washington Administrative Code

WEA Wireless Emergency Alerts

WPS Wireless Priority Service