

GRAYS HARBOR COUNTY CEMP

Agricultural and Natural Resources

This document serves as Emergency Support Function #11 (ESF#11) of the Grays Harbor County Comprehensive Emergency Management Plan (CEMP).

Grays Harbor County Emergency Management

310 West Spruce

Montesano, WA 98563

Office: (360) 249-3911

Fax: (360) 249-3805

ghcdem@graysharbor.us



March 28, 2023

Table of Contents

Introduction 1

 Purpose 1

 Scope..... 1

 Planning Assumptions..... 1

Concept of Operations..... 2

 General..... 2

 Organization..... 2

Phases of Emergency Management..... 4

 Mitigation and Preparedness Activities 4

 Response and Recovery Activities 4

Responsibilities 4

 WSU Ext and the WSDA 4

 WDFW and ECY 4

 Grays Harbor County Department of Environmental Health 5

 Grays Harbor County Public Health 5

 Grays Harbor County Department of Forestry and Tax Title Management in cooperation with DNR 5

 County and Municipal Animal Services..... 5

 County Departments and Municipalities and Natural, Historic, and Cultural Resources..... 6

Acronyms 7

Primary Agencies:

Grays Harbor County Environmental Health Division
Washington Department of Ecology (ECY)
Washington Department of Fish and Wildlife (WDFW)
Washington State Department of Agriculture (WSDA)

Support Agencies:

Grays Harbor County Department of Forestry and Tax Title Management
Grays Harbor County Emergency Management (GHC EM)
Grays Harbor County Public Health
Local Veterinarians
Municipal Forests (Montesano, Hoquiam, Aberdeen)
Private Agricultural/Aquaculture Organizations and Producers
Private Animal Welfare Organizations
Private Forest Land Managers
Regional Water Purveyors
US Forest Service (USFS)
Washington Department of Natural Resources (DNR)
Washington State University Extension (WSU Ext)

Introduction

Purpose

Emergency Support Function 11 Agriculture and Natural Resources (ESF #11) coordinates efforts before, during, and after an emergency or disaster of countywide significance. ESF #11 addresses protection against an outbreak of a highly contagious or economically devastating animal (including zoonotic) or plant/tree disease, assurance of food safety and security, care of domestic large and small livestock and pets, and protection of natural and cultural resources and historic properties.

Scope

The four primary functions of ESF #11 are to:

1. Implement a local response to an outbreak of a highly contagious animal disease, an outbreak of highly infective plant/tree disease, or an economically devastating infestation of plants or animals.
2. Assure the safety and security of the commercial food supply by investigating, testing, and analyzing the potential adulteration of products and implementing a local response.
3. Coordinate actions to prevent the loss of livestock and pets due to a disaster or emergency and to properly dispose of animal carcasses if necessary.
4. Take appropriate action to conserve, restore, and recover natural, cultural, and historic resources before, during, and after an emergency or disaster.

Planning Assumptions

It is neither implied nor should it be inferred that this plan guarantees that a perfect response to an emergency or disaster will be practical or possible. No plan can shield individuals from all events. While every reasonable effort will be made to respond to emergencies or disasters, resources, and or systems may be overwhelmed. Some events provide little or no warning to implement operational procedures and all emergency plans are dependent upon tactical execution, which may be imperfect. This plan can only be fulfilled if the situation, information exchange, extent of actual capabilities and resources are available at the time of the incident.

This plan coordinates the emergency response of a multitude of agencies and organizations. As a result, it is impossible to list all precepts (regulations, policies, and procedures) that regulate the specific operations. Each primary and support agency or organization in this ESF is responsible to develop realistic and manageable precepts specific to its respective emergency operations.

Concept of Operations

General

While Incident Command will assist as possible with animal issues, the priority will remain the protection of the health and safety of citizens. It is essential that animal owners remain responsible and accountable for their livestock and pets. Incident Command will organize and coordinate the capabilities and resources of county government, municipalities, private organizations, and the private sector to facilitate the delivery of services, technical assistance, expertise, and other support for emergency operations within this ESF.

Upon a proclamation of a state of emergency, the Grays Harbor County Board of County Commissioners (BOCC) may invoke temporary controls on local resources and travel to contain the spread of infectious disease among domesticated animals and food products. Grays Harbor County Environmental Health may need to escalate public health and safety inspections and surveillance. The type and number will be dependent on the cause and impact of the emergency or disaster. The Grays Harbor County Fairgrounds may serve as a temporary boarding facility for domestic livestock.

When an emergency goes beyond local resources, the EOC may be requested to coordinate additional logistical support. Requests for and coordination of resources will be made through the EOC. The EOC may prioritize resource requests and escalate requests to State and Federal agencies.

Organization

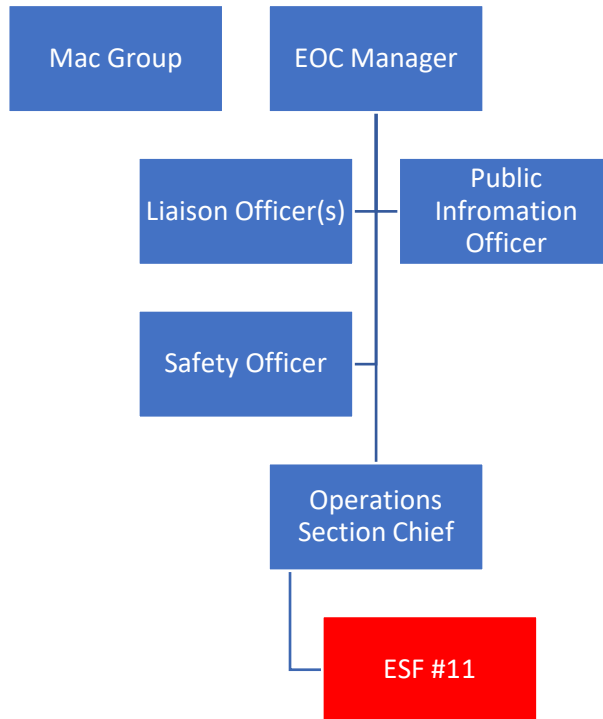
The Washington State Department of Agriculture (WSDA) has statutory authority to identify and monitor plant problems. Washington State University Extension (WSU Ext) has in place an extensive network of expertise and resources to assist the WSDA in developing an appropriate local response. WSDA is the primary agency coordinating local response to an outbreak of a countywide significance of infectious disease in domesticated livestock.

Grays Harbor County Environmental Health is the primary agency for coordinating local response to adulterated or suspected adulterated food supplies and zoonotic disease. The Grays Harbor County Department of Forestry and Tax Title Management may assist with coordinating local response for infestation and disease of commercial forestry resources of countywide significance.

County departments and municipalities act as the primary agencies for protecting, recovering, and restoring natural, cultural, and historic resources at the local level before, during, and after an emergency or disaster of countywide significance. County departments and municipalities act as the primary agencies for providing assistance, if possible and resources allow, to lost or injured pets before, during, and after an emergency or disaster of countywide significance. Incident Command may request animal welfare organizations or local veterinarians to provide technical assistance and volunteer support to primary agencies in this effort.

The WDFW and Washington State Department of Ecology (ECY) are the primary agencies for coordinating efforts relating to non-domesticated animal disease or infestation of countywide significance.

When ESF #11 is active at the EOC, it will fall under the Operations Section unless otherwise designated by the EOC Manager. ESF #11 should be staffed by a Grays Harbor County Environmental Health Representative. Alternative staffing can come from the other Primary and Support agencies within this plan.



Phases of Emergency Management

Mitigation and Preparedness Activities

- Maintain an inventory of available resources including trained personnel.
- Develop and maintain standard operating procedures for emergency and disaster situations.
- Retrofit historic and cultural structures to prevent physical damage during emergencies or disasters as funding allows.
- Assure the training of personnel and volunteers in their emergency responsibilities.

Response and Recovery Activities

- Provide a liaison to the EOC or other command location to assure coordination with other agencies, as necessary.
- Coordinate emergency planning activities and information with neighboring jurisdictions and the EOC.
- Personnel providing emergency assistance will maintain chain of command in accordance with NIMS procedures and protocols and work within the Incident Command System (ICS).
- Maintain records and document all expenditures during the emergency or disaster.
- Follow its internal standard operating procedures when responding to an incident.
- Utilize volunteers to their appropriate level of training and ensure appropriate measures are in place to protect the health and safety of all workers.

Responsibilities

WSU Ext and the WSDA

- Detect plant and animal diseases in conjunction with local veterinarians and farmers.
- Provide guidance for immediate protective actions within Grays Harbor County and report and maintain liaison to the EOC and state and/or federal agencies.
- Determine the locally affected boundaries.
- Ensure continued contact with agricultural associations.
- Draft agricultural advisories for affected areas and provide information to the JIC in accordance with ESF #15.
- Make recommendations on protective or disposal actions.

WDFW and ECY

- In partnership with the Grays Harbor Weed Control Board, detect and monitor for invasive and exotic plant infestations.
- Detect and monitor invasive and exotic fish and wildlife.

- Provide guidance for immediate protective action within Grays Harbor County and report and maintain liaison with state and/or federal agencies.
- Determine the locally affected boundaries.
- Ensure continued contact with the agriculture industry and aquaculture, wildlife associations, and recreational groups.
- Draft advisories for affected areas and provide information to the JIC.
- Make recommendations on protective action.

Grays Harbor County Department of Environmental Health

- Determine whether food sources for public distribution are safe for human consumption.
- Detect and monitor zoonotic diseases with the aid of support agencies.
- Assist in determining the locally affected boundaries.
- Provide guidance for immediate protective action within Grays Harbor County and report and maintain liaison with state and/or federal agencies.
- Draft citizen advisories for affected areas and provide information to the JIC.

Grays Harbor County Public Health

- Conduct mass inoculation or medication distribution when indicated per ESF #8.

Grays Harbor County Department of Forestry and Tax Title Management in cooperation with DNR

- Assist with the Detect and monitoring of commercial tree diseases and pests.
- Assist with determining Determine the locally affected boundaries of disease or pest infestation.
- Provide guidance for immediate protective action within Grays Harbor County and report and maintain liaison with state and/or federal agencies.
- Ensure continued contact with private, state, and federal forestry landowners.
- Draft forestry advisories for affected areas and provide information to the JIC.
- Make recommendations on protective action.

County and Municipal Animal Services

- Provide citizens with pre-incident education in conjunction with volunteer groups regarding emergency care and evacuation of pets. This includes making livestock owners aware of the need to have current identification and medical information in the event of evacuation as well as anticipate providing appropriate food, water, handling, and medication needs.
- Identify sites/facilities for boarding and/or quarantining pets, if possible.
- Coordinate with volunteer organizations and agencies to provide volunteer services for animal care upon request.

County Departments and Municipalities and Natural, Historic, and Cultural Resources

- Determine resources available for natural, historic, and cultural resource protection.
- Attempt to minimize damage or loss to local resources during and after emergencies or disasters.
- Establish links with state and federal agencies.
- Inventory and document resources impacted by the disaster or emergency.

Acronyms

AAR	After Action Review/Report
ACCESS	A Central Computerized Enforcement Service System
AEC	Grays Harbor Auxiliary Emergency Communications
ARC	American Red Cross
AWC	Alert and Warning Center
CAA	Clean Air Act
CAMEO	Computer Aided Management for Emergency Operations
CEMNET	Comprehensive Emergency Management Network
CEMP	Comprehensive Emergency Management Plan
CERCLA	Comprehensive Environmental Response, Compensation, and Liability Act
CHEMTREC	Chemical Transpiration Emergency Center
DMAT	Disaster Medical Assistance Team
DMCC	Disaster Medical Control Center
DMORT	Disaster Mortuary Operational Response Team
DNR	Washington State Department of Natural Resources
DOH	Washington State Department of Health
DSHS	Washington State Department of Social and Health Services
E911	Grays Harbor Emergency Communications
EAS	Emergency Alert System
ECY	Washington State Department of Ecology
EHS	Extremely Hazardous Substances
EMD	Emergency Management Division
EMPC	Emergency Management Planning Committee
EMS	Emergency Medical Services
EPCRA	Emergency Planning and Community Right-to-Know Act
ERG	Emergency Response Guide Book

ESF	Emergency Support Function
GETS	Government Emergency Telecommunications Service
GHC EM	Grays Harbor County Emergency Management
GHC EOC	Grays Harbor County Emergency Operations Center
IC	Incident Commander
ICS	Incident Command System
ICP	Incident Command Post
JIC	Joint Information Center
JIS	Joint Information System
LECC	Local Emergency Communications Committee
LEPC	Local Emergency Planning Committee
NAWAS	National Warning System
NIMS	National Incident Management System
NOAA	National Oceanic and Atmospheric Administration
NRC	National Response Center
NRF	National Response Framework
OSCCR	On-Scene Control and Coordination Radio
OSHA	Occupational Safety and Health Administration
PIO	Public Information Officer
PSAP	Public Safety Access Point
RCW	Revised Code of Washington
SDS	Safety Data Sheet
SEOC	State Emergency Operations Center
SERC	State Emergency Response Commission
SOP	Standard Operating Procedures
TERC	Tribal Emergency Response Commission
UC	Unified Command

WAC Washington Administrative Code

WEA Wireless Emergency Alerts

WPS Wireless Priority Service