

GRAYS HARBOR COUNTY CEMP

Firefighting

This document serves as Emergency Support Function #4 (ESF#4) of the Grays Harbor County Comprehensive Emergency Management Plan (CEMP).

Grays Harbor County Emergency Management

310 West Spruce

Montesano, WA 98563

Office: (360) 249-3911

Fax: (360) 249-3805

ghcdem@graysharbor.us



March 28, 2023

Table of Contents

Introduction 1

 Purpose 1

 Scope..... 1

 Situation..... 1

 Planning Assumptions..... 1

Policies 1

Concept of Operations..... 2

 General..... 2

 Organization..... 2

 Structural Firefighting 3

 Wildland Firefighting..... 3

 FMAG 4

 Central Fire Mobilization 4

Phases of Emergency Management & Responsibilities..... 5

 Mitigation and Preparedness Activities 5

 All Agencies 5

 Fire Service Agencies..... 5

 Grays Harbor County Emergency Management 5

 Public Works Agencies 6

 Response Activities 6

 Fire Service Agencies..... 6

 Grays Harbor County Emergency Management 6

 Law Enforcement Agencies..... 7

 Public Works Agencies 7

 Recovery Activities..... 7

 All Agencies 7

 Fire Service Agencies..... 7

 Grays Harbor County Emergency Management 7

 Law Enforcement Agencies..... 7

Appendices..... 8

References 8

 Local 8

State 8

Federal 8

Acronyms 9

Appendix A – Requesting State Fire Mobilization..... 12

Appendix B – Grays Harbor County Fire Department Map 14

Appendix C – Washington State Department of Natural Resources Region Map..... 15

Primary Agencies:

Grays Harbor County Fire Districts

Municipal Fire Departments

Support Agencies:

American Red Cross

Federal Bureau of Alcohol, Tobacco, and Firearms

Grays Harbor Communications Center (E911)

Grays Harbor County (All Departments)

Grays Harbor County Emergency Management (GHC EM)

Grays Harbor Emergency Medical Services and Trauma Council

Harbor Regional Hospital

Municipalities (All Departments)

Office of the State Fire Marshall – Washington State Patrol

Port of Grays Harbor

Summit Pacific Medical Center

United States Coast Guard

United States Forest Service (USFS)

Washington State Department of Natural Resources (DNR)

Washington State Department of Transportation (WSDOT)

Washington State Emergency Management Division (EMD)

Washington State National Guard

Washington State Parks and Recreation Commission

Introduction

Purpose

Emergency Support Function # 4 (ESF#4) Firefighting provides an organizational framework that supports detection and suppression of wildland, rural, and urban fires resulting from, or occurring coincidentally with, an emergency or disaster of countywide significance.

Scope

ESF #4 addresses the management and coordination of public fire and life safety services in cooperation with the fire departments and districts in Grays Harbor County.

Situation

Grays Harbor County experiences urban, rural, and wildland fires. In the event of a disaster, large, damaging fires could occur. Local resources may become depleted. Due to the geographic location of Grays Harbor County, assistance from outside the county may take extended periods of time to arrive. Therefore, Grays Harbor County Fire Agencies must have a robust mutual aid system for assisting neighboring agencies.

Planning Assumptions

It is neither implied nor should it be inferred that this plan guarantees a perfect emergency or disaster response will be practical or possible. No plan can shield individuals from all events. While every reasonable effort will be made to respond to emergencies or disasters, resources, and or systems may be overwhelmed. Some events provide little or no warning to implement operational procedures and all emergency plans are dependent upon tactical execution, which may be imperfect. This plan can only be fulfilled if the situation, information exchange, extent of actual capabilities and resources are available at the time of the incident.

Policies

Priority is given to firefighter safety, public safety, and protecting property and environment, in that order.

During emergencies, local fire agencies mobilize all available apparatus and personnel required to mitigate the situation. Fire agencies have mutual aid agreements which are activated when additional resources are necessary. Mutual aid and local resources must be nearly exhausted before requesting regional or state fire mobilization assistance.

Each local, state, or federal agency will assume the full cost of protection of the lands within its respective boundaries unless other arrangements are made. Fire protection agencies should not incur costs in jurisdictions outside of their area without reimbursement unless there is a local

mutual aid agreement between those jurisdictions. It is essential that the issue of financial limitation be clarified through proper channels for efficient delivery of fire services.

Coordination with and support of state and local fire suppression organizations is accomplished through the State Fire Defense Board- DNR, in cooperation with the State Fire Marshal, WA State Emergency Management Division (EMD), or other appropriate fire suppression organizations operating under National Incident Management System (NIMS)/Incident Command System (ICS).

Concept of Operations

General

On-scene fire operations within Grays Harbor County are managed by the Incident Command System (ICS). Fire Service mutual-aid agreements provide for additional local personnel and resources in the event individual county jurisdictions are unable to contain a given situation with existing resources and personnel. Each agency assisting under the mutual-aid agreement retains its own autonomy, with overall direction provided by the Incident Commander.

Grays Harbor Communications (E911) serves as the Public Safety Access Point (PSAP) for Grays Harbor County Fire Agencies. When the general public experiences an emergency, they are to call 9-1-1 to contact E911. E911 will then dispatch the appropriate resources to meet the needs of the incident. Additional support needed will be requested by the IC to E911.

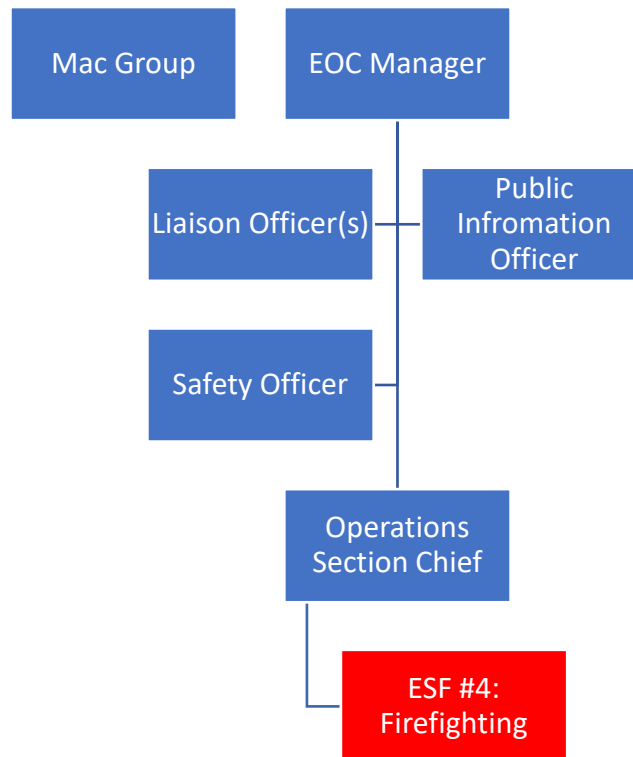
When an emergency goes beyond local mutual aid, the EOC may be requested to coordinate additional logistical support. Fire agencies may request activation of other resources. Requests for and coordination of resources will be made through the EOC. The EOC may prioritize resource requests depending on the priorities outlined above in Policies. As resources are ordered by the Incident Command Post (ICP), the ESF #4 position at the EOC is to channel resource requests through ESF #7 – Resource Support.

Operations outside of firefighting that are typically performed by Fire Service agencies are not covered by this plan. Communications (ESF #2), EMS (ESF #8), and Hazmat (ESF #10) can be found under their respective plans.

Organization

Fire Agencies within Grays Harbor County operate under the concepts of NIMS/ICS. Each fire agency is an independent agency reporting to elected representatives. Within each agency is an identified chain of command that oversees the operational portion of the agency.

When ESF #4 is active at the EOC, it will fall under the Operations Section unless otherwise designated by the EOC Manager. ESF #4 should be staffed by a Grays Harbor County Fire Service Representative, ideally a chief level officer. Alternative staffing can come from the Central Region Fire Defense Coordinator or designee.



Structural Firefighting

The EOC is not activated for routine structure fires within Grays Harbor County. However, if a fire requires complex incident management or extensive outside resources, the EOC may be activated by the on-scene Incident Commander. The EOCs primary role for a structure fire will be logistical/supplies support. The EOC can utilize the Grays Harbor County Mutual Aid Agreement, the Omnibus Agreement, and/or the Central Region Mobilization Plan.

In the event of a catastrophic event that causes numerous structure fires across the county, the EOC can assist in the procurement of additional resources and coordination of resources between the multiple incidents. As resources are ordered by the Incident Command Post (ICP), the ESF #4 position at the EOC is to channel resource requests through ESF #7 – Resource Support.

Wildland Firefighting

The EOC Duty Officer is notified of Wildland fires the occur within Grays Harbor County. Due to the nature of the hazard, wildland events can escalate quickly requiring quick activation of the EOC and additional resources. The EOCs primary role for wildland fires will be logistical/supplies support, Public Information, regional, and state coordination. ESF #4 during wildfire events should consider [FMAG](#) and [Central Fire Mobilization](#) Activation.

Grays Harbor County falls within three different Washington State Department of Natural Resources (DNR) regions. [Appendix C – Washington State Department of Natural Resources](#)

[Region Map](#) is the DNR Region Map covering Grays Harbor County. Below are the fire departments broken out by DNR Region.

DNR Region	South Puget Region	Olympic Region	Pacific Cascade Region
Agencies	City of McCleary	City of Aberdeen	City of Cosmopolis
	Fire District #1	City of Elma	Fire District #1
	Fire District #5	City of Hoquiam	Fire District #2
	Fire District #12	City of Montesano	Fire District #15
		City of Ocean Shores	South Beach RFA
		East Grays Harbor F&R	
		Fire District #2	
		Fire District #4	
		Fire District #6	
		Fire District #7	
		Fire District #8	
		Fire District #10	
		Fire District #16	
		Fire District #17	

Washington State DNR’s 24/7 dispatch number is 1-800-562-6010.

FMAG

Fire Management Assistance Grant (FMAG) program is a grant program authorized under the Stafford Act that can reimburse a large portion of costs to the local fire agencies and county. The program is authorized when a fire receives a federal fire declaration from FEMA. A federal declaration may be requested and issued for an uncontrolled fire when a threat of a major disaster exists.

Requests for FMAG should be made to ESF #4 at the EOC. ESF #4 will fill out the current FMAG Request Checklist Form and call the State FMAG Program cell phone at (253) 345-0436 to advise them of the FMAG request. If they do not reach the FMAG Program cell phone, they should call the Washington State Emergency Operations Center Alert & Warning Center at (800) 258-5990.

Central Fire Mobilization

Under RCW 43.43.961, the Fire Service Resource Mobilization plan is implemented to provide personnel, equipment, and other logistical resources when a wildland fire or other emergency exceeds the firefighting capacity of the local jurisdictions. The request for Fire Mobilization must be made by the Fire Chief or designee of the authority having jurisdiction for the request. The EOC under ESF #4 may assist in coordinating the request for Fire Mobilization.

Grays Harbor County falls within the Central Fire Mobilization Region. The County has a County Coordinator that is voted on by the County Fire Chiefs. Additionally, the Central Region has a Regional Coordinator. [Appendix A – Requesting State Fire Mobilization](#) spells out the process of how fire mobilization requests are processed.

In the event of Fire Mobilization being approved for Grays Harbor County or when otherwise unable to fill the ESF #4 role at the EOC, the Regional Coordinator will supplant ESF #4 at the EOC.

Phases of Emergency Management & Responsibilities

Mitigation and Preparedness Activities

All Agencies

- Maintain response equipment in response ready condition.
- Continue to train and utilize NIMS/ICS and other operational procedures to effect full utilization of resources.
- Develop and maintain emergency and disaster response policies, plans, and guidelines/procedures.
- Participate in interagency disaster response training, drills and exercises to test existing plans and procedures.
- Maintain activation and alerting procedures and ensure that all personnel are trained at an appropriate level.
- Maintain current inventory of resources and typing according to NIMS resource standards and report to GHC EM and E911.
- Participate in local mutual aid agreements.
- Ensure that a continuity of operations plan is in place to maintain essential services.

Fire Service Agencies

- Conduct fire safety inspections and public education on how to reduce fire potential.
- Provide fire prevention and mitigation activities and enforce ordinances that relate to life safety and hazardous materials.
- Work to ensure compliance with the International Fire Code and the International Building Code.
- Support or help establish local codes and ordinances that help reduce the threat of major conflagrations, such as restrictions on combustible roofing materials.
- Encourage participation in the State Fire Mobilization Plan.
- Determine updates of the countywide mutual aid agreement, as needed.
- Develop and review agency Standard Operating Procedures, resource inventories, and other operational plans.
- Assure that all personnel are trained in fire suppression and other fire related activities.
- Ensure the ability to mobilize personnel and equipment for fire protection and other related services as provided in the department's plans and procedures.

Grays Harbor County Emergency Management

- Maintain awareness of the local mutual aid agreements.

Public Works Agencies

- Assist with identifying evacuation routes.

Response Activities

Fire Service Agencies

- Provide for life safety, incident stabilization, and property conservation.
- Send representative to EOC to staff ESF #4.
- Assist with the dissemination of warnings.
- Provide Urban Search & Rescue and support.
- Coordinate requests for mutual aid through E911.
- Provide traffic control and evacuation support as needed.
- Respond to Hazardous Material incidents per ESF #10.
- Provide emergency medical and transportation services in coordination with ESF #8.
- Conduct damage assessments and report to EOC.
- Conduct cause and/or origin of fire investigations.
- Provide temporary power and emergency lighting at emergency scenes as able.
- Provide specialized support functions, resources, or emergency personnel as agreed upon, contracted for, or provided for in mutual aid agreements.
- Report to designated staging areas as directed for assignment.
- Provide fire prevention and suppression activities within the respective jurisdiction.
- Assist in evacuation of areas affected by disaster.
- Work within the guidelines of the Grays Harbor County fire mutual aid agreement.
- Maintain the overall responsibility and authority to coordinate emergency fire operations within the respective jurisdiction.
- If the fire originates on unprotected lands, the first arriving agency will assume command until protected lands are determined threatened. Once the threat is determined, the responsible protection agency will assume command.
- Participate in the Central Regional and State Fire Mobilization Plan, if available.

Grays Harbor County Emergency Management

- Activate EOC in support of fire operations, as appropriate.
- Obtain state mission number for event.
- Provide support and assistance to Incident Command.
- Assist in warning the public of evacuation, traffic routing, and shelter in-place.
- Provide alert and warning to persons in the affected area through the Grays Harbor County Emergency Alerts.
- Assist in coordination of Public Information according to ESF #15.

Law Enforcement Agencies

- Provide traffic and crowd control.
- Provide for scene security.
- Provide investigative services, as necessary.
- Assist in Urban Search & Rescue as necessary.
- Direct evacuation.
- Provide resources and services as requested.

Public Works Agencies

- Provide traffic control support.
- Provide heavy equipment, as appropriate.
- Assist in water resource management upon request.
- Provide resources and services as requested.

Recovery Activities

All Agencies

- Participate in post-disaster briefings and development of an After-Action Report.

Fire Service Agencies

- Investigate cause and/or origin of fire.
- Plan and implement demobilization of resources.
- Reactivate stations for normal operations.
- Return apparatus and equipment to regularly assigned locations.
- Assist the public in recovery operations as resources allow.
- Prepare and submit proper documentation (National Incident Fire Report).
- Document expenditures for auditing and reimbursement purposes and report to the EOC if appropriate.
- Prepare invoice billing for cost recovery and report to EOC, if appropriate.
- Submit reports to elected official and State Fire Marshal.

Grays Harbor County Emergency Management

- Act as liaison between local fire agencies and state or federal damage assessment teams, as appropriate.
- Coordinate information with State Emergency Operations Center (SEOC).
- Demobilize EOC when appropriate (Refer to ESF #5).

Law Enforcement Agencies

- Assist with fire investigations.
- Demobilize and place units back in service to be response ready.

Appendices

[Appendix A. Requesting State Fire Mobilization](#)

[Appendix B. Grays Harbor County Fire Department Map](#)

[Appendix C. Washington State Department of Natural Resources Region Map](#)

References

Local

- Central Region Fire Defense Plan
- Mutual Aid Assistance Agreements
- Homeland Security Region 3 Omnibus Agreement

State

- [Fire Management Assistance Program for Public Agencies](#)
- [FMAG Request Checklist](#)
- [Washington State Patrol All Risk Mobilization](#)
- [Washington State Patrol All Risk Mobilization Request Form](#)

Federal

- [Resource Typing Library Tool](#)
- [Typed Resource Definitions for Fire and Hazardous Materials Resources](#)

Acronyms

AAR	After Action Review/Report
ACCESS	A Central Computerized Enforcement Service System
AEC	Grays Harbor Auxiliary Emergency Communications
ARC	American Red Cross
AWC	Alert and Warning Center
CAA	Clean Air Act
CAMEO	Computer Aided Management for Emergency Operations
CEMNET	Comprehensive Emergency Management Network
CEMP	Comprehensive Emergency Management Plan
CERCLA	Comprehensive Environmental Response, Compensation, and Liability Act
CHEMTREC	Chemical Transpiration Emergency Center
DMAT	Disaster Medical Assistance Team
DMCC	Disaster Medical Control Center
DMORT	Disaster Mortuary Operational Response Team
DNR	Washington State Department of Natural Resources
DOH	Washington State Department of Health
DSHS	Washington State Department of Social and Health Services
E911	Grays Harbor Emergency Communications
EAS	Emergency Alert System
ECY	Washington State Department of Ecology
EHS	Extremely Hazardous Substances
EMD	Emergency Management Division
EMPC	Emergency Management Planning Committee
EMS	Emergency Medical Services
EPCRA	Emergency Planning and Community Right-to-Know Act
ERG	Emergency Response Guide Book

ESF	Emergency Support Function
GETS	Government Emergency Telecommunications Service
GHC EM	Grays Harbor County Emergency Management
GHC EOC	Grays Harbor County Emergency Operations Center
IC	Incident Commander
ICS	Incident Command System
ICP	Incident Command Post
JIC	Joint Information Center
JIS	Joint Information System
LECC	Local Emergency Communications Committee
LEPC	Local Emergency Planning Committee
NAWAS	National Warning System
NIMS	National Incident Management System
NOAA	National Oceanic and Atmospheric Administration
NRC	National Response Center
NRF	National Response Framework
OSCCR	On-Scene Control and Coordination Radio
OSHA	Occupational Safety and Health Administration
PIO	Public Information Officer
PSAP	Public Safety Access Point
RCW	Revised Code of Washington
SDS	Safety Data Sheet
SEOC	State Emergency Operations Center
SERC	State Emergency Response Commission
SOP	Standard Operating Procedures
TERC	Tribal Emergency Response Commission
UC	Unified Command

WAC Washington Administrative Code

WEA Wireless Emergency Alerts

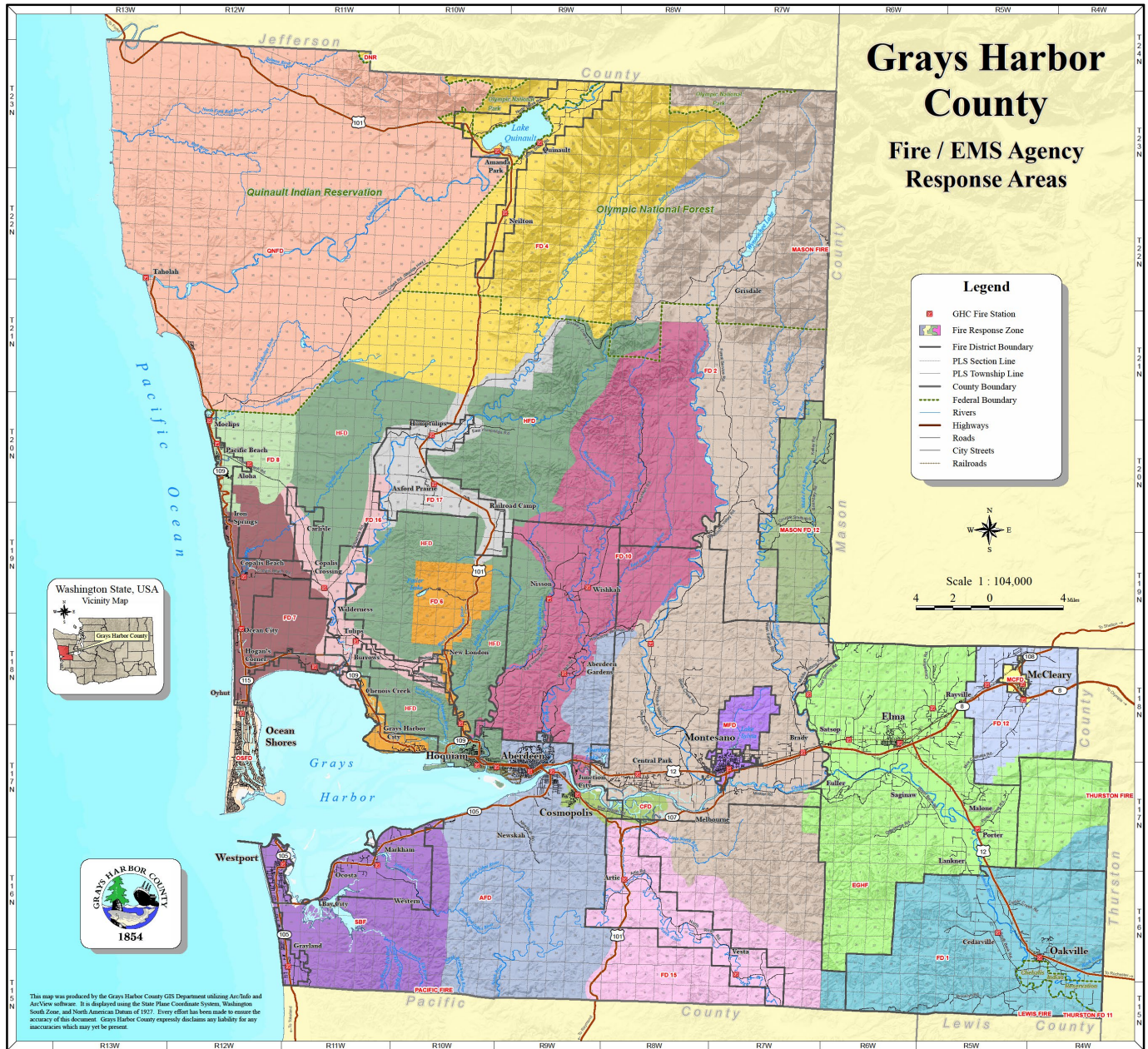
WPS Wireless Priority Service

Appendix A – Requesting State Fire Mobilization

Responsible Party	Step	Cause/Action
Local Fire Chief	1	Fire, disaster, or other event that jeopardizes the ability of the jurisdiction and/or region to provide for the protection of life or property.
	2	Local and mutual aid resources have or will be exhausted.
	3	Contacts the County Coordinator
County Coordinator	4	Contacts the Regional Coordinator
	13	If authorized or denied, notifies the local fire chief.
Regional Coordinator	5	Contacts Local Fire Chief and County Coordinator, decision made based upon local and regional resources and status of incident to request Mobilization.
	6	Request Completed and faxed to State EOC
	12	If authorized or denied, notifies the County Coordinator
State EOC	7	Receives the Mobilization Request – ensures that Regional Coordinator has been involved in process and notifies the WSP Liaison or designee.
WSP Mobilization Coordinator	8	Contact the Regional Coordinator to verify the request, current situation, and resources requested. A determination of what type of Incident Management Team is needed.

	10	If authorized, or denied, notify Region Coordinator of decision
	11	Call for a response team to EOC, and staff to field.
Chief of the Washington State Patrol	9	Decision made in consultation with Governor’s Chief of Staff.
WSP EOC Response	14	Will request resources closest to the incident.
WSP Field Response	15	Will issue resource order number for initial attack resources and assist the Local Fire Chief and incoming Incident Management Team as needed

Appendix B – Grays Harbor County Fire Department Map



Appendix C – Washington State Department of Natural Resources Region Map

